

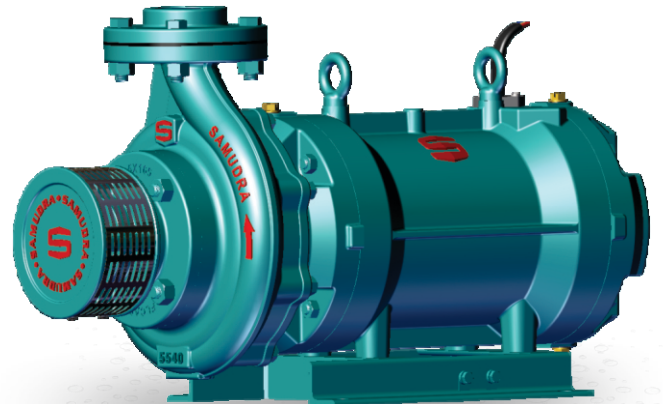
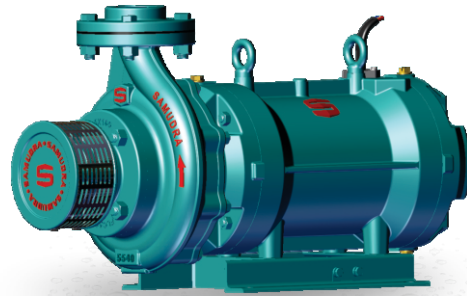


Openwell Submersible Monobloc Pumpsets (THREE PHASE)

▶ SSM

N ADVANCE SERIES

Parameters	N series
HP	3.0 - 7.5
Head Range	8 - 44 m
Discharge Range	5 - 18 lps
Phase	Three
Voltage	350v (-15% to to +6%)
Speed	2850 rpm



Salient Features

- Energy efficient Motors and Pumps
- Wide operating Voltage Band (200v to 400v)
- Robust Design for Better Rigidity
- Increased Water Volume for Better Cooling
- Heavy duty water Lubricated Journal and Thrust bearing for long trouble free Operation
- Three layer protection to avoid sand entry into Motor
- Increased Life with High Grade Cast Iron Components - FG 260
- Superior Construction for Easy Installation & Easy serviceability

Application

- Open, Sprinkler, Drip and Lift Irrigation
- Pumping water from Openwell, river and canal for Agricultural Irrigation
- Water supply in apartments & buildings
- Fountains & Gardening